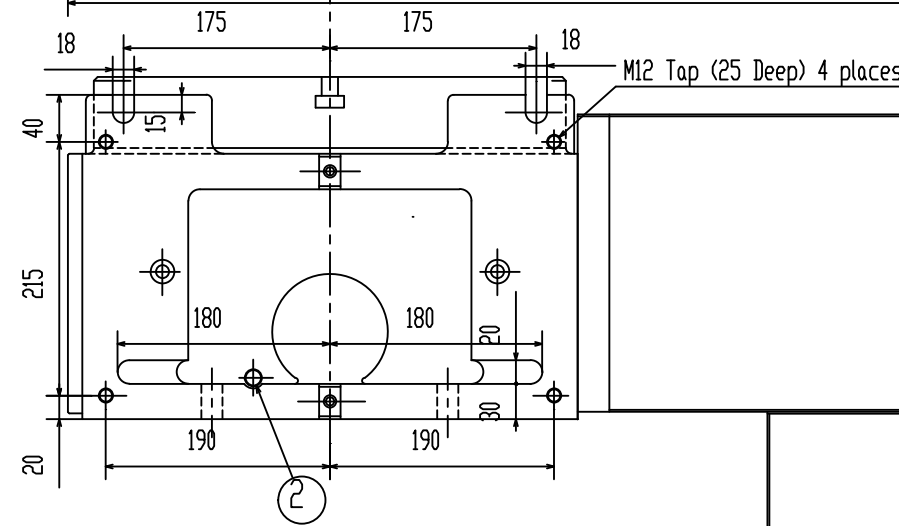
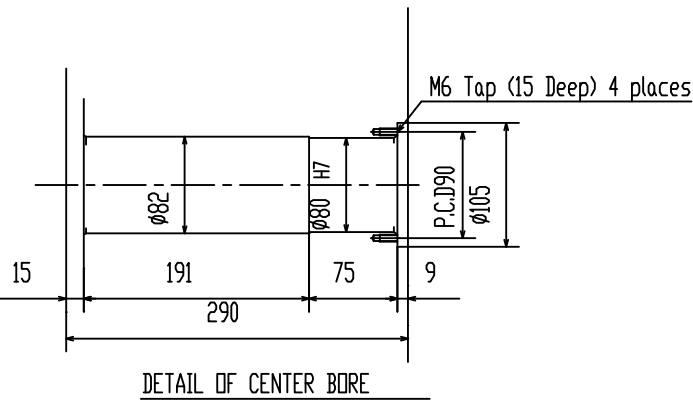
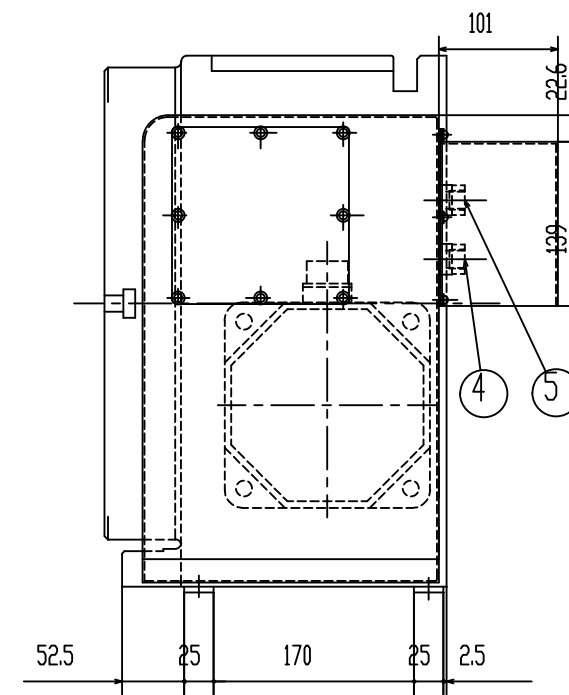
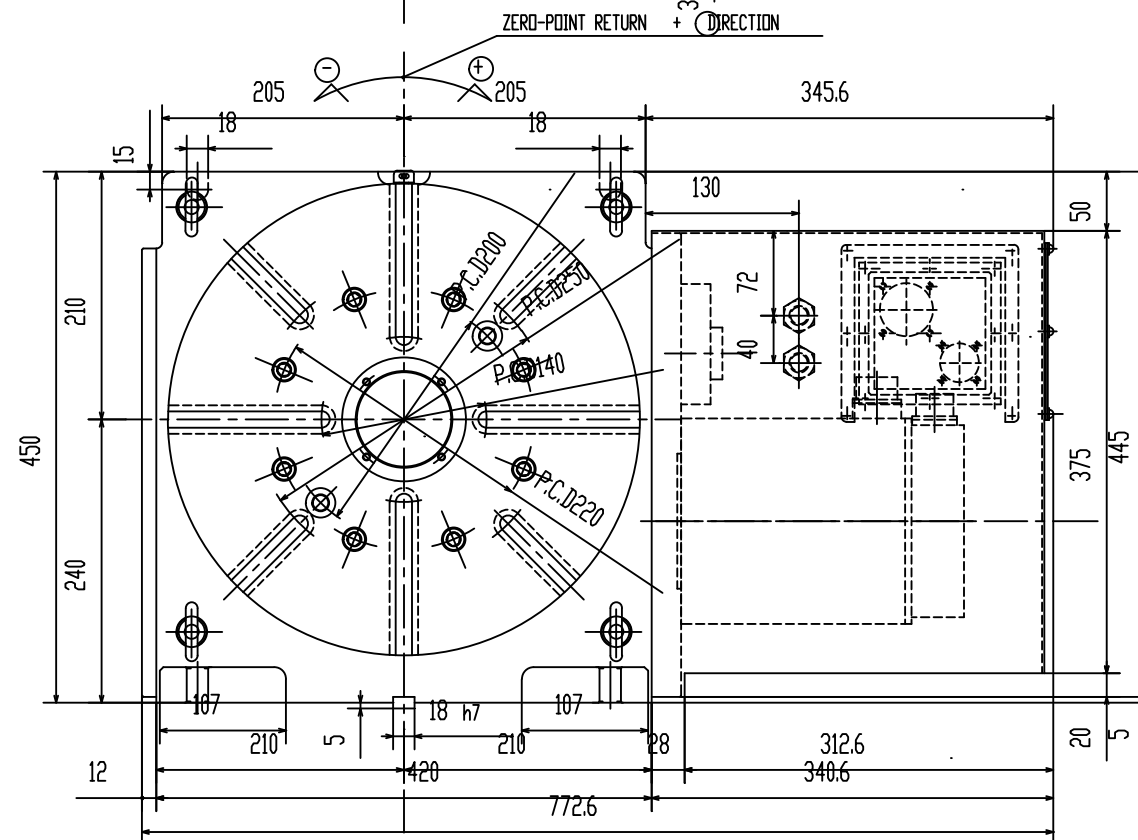
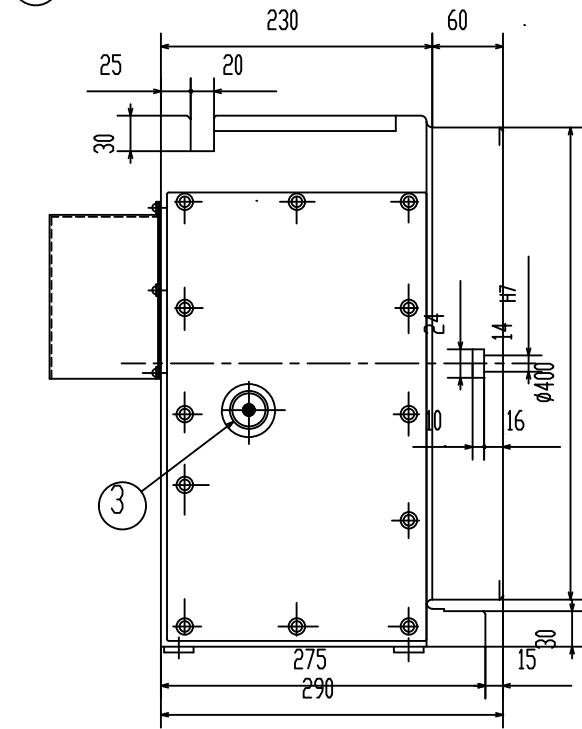


FITING METAL (4 Sets)



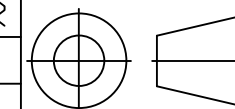
SPECIFICATION	
DIAMETER OF TABLE	ø400 mm
DIAMETER OF SPINDLE HOLE	ø80 H7 mm
CENTER HEIGHT	240 mm
WIDTH OF T-SLOT	14 H7 mm
WIDTH OF GUIDE BLOCK	18 h7 mm
INDEXING ACCURACY	±2 sec
CLAMPING METHOD	HYDRAULIC
CLAMPING TORQUE	600 kgf m
NET WEIGHT	270 kg
INERTIA AT MOTOR SHAFT	0.03 kg cm sec <sup>2</sup>
SERVO MOTOR	FANUC alpha 12
PULSE CODER	65,536 PPR 1,000,000 PPR
TOTAL REDUCTION RATIO	1/90
ROTATION SPEED	16.6 rpm
MIN INCREMENT	1.0°
MAX LOAD (Vertical)	250 kg
MAX LOAD (Horizontal)	500 kg
MAX CUTTING THRUST	600 kgf m
MAX WORK INERTIA	65.4 kg cm sec <sup>2</sup>

1	OIL FILLING PORT FOR BODY	5	CLAMP HYDRAULIC SUPPLY PORT
2	OIL DRAIN FOR BODY	6	
3	SIGHT GLASS FOR BODY	7	
4	UNCLAMP HYDRAULIC SUPPLY PORT	8	

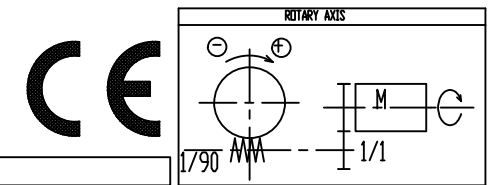
This drawing owned by NIKKEN Kosakusho UK Ltd, is conditionally loaned and is to be returned or destroyed upon request. The borrower by receiving it has agreed :

i) Not to reproduce or copy information contained within, be it in whole or in part.  
ii) Not to furnish information from it to others or to make use of it that is or maybe injurious to NIKKEN KOSAKUSHO UK LIMITED

DRAWN	DESIGNER
DATE	DATE
SCALE	SCALE



T I T L E 1  
T I T L E 2



KS-NV400R-

**NIKKEN**

DRG No: NUMBER