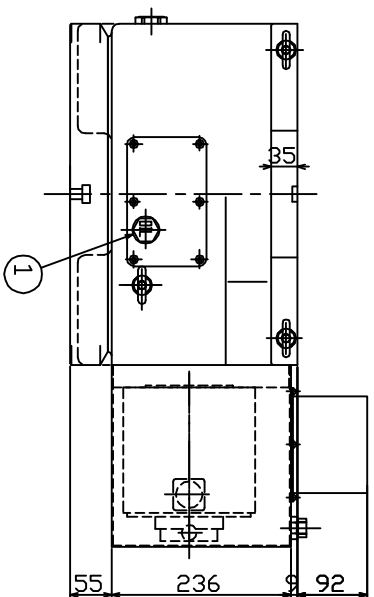
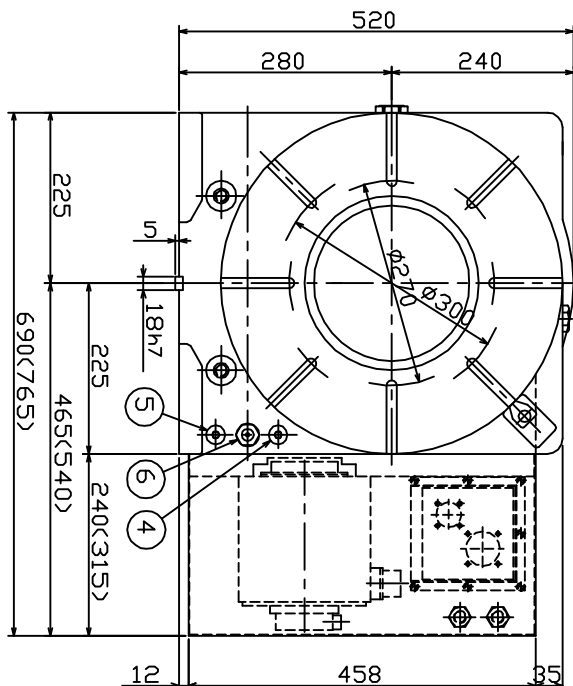
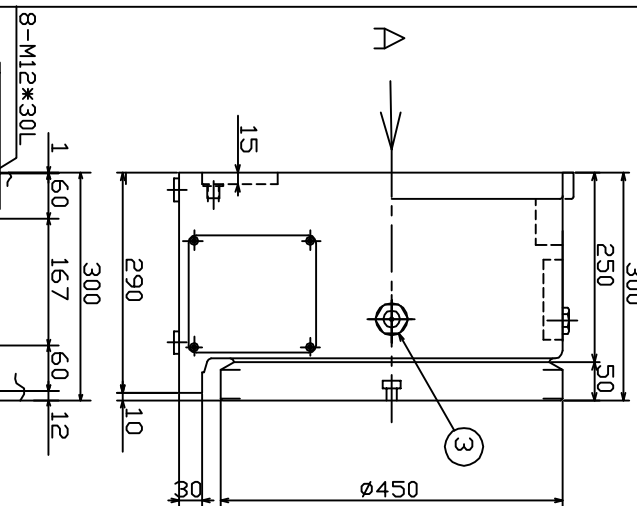


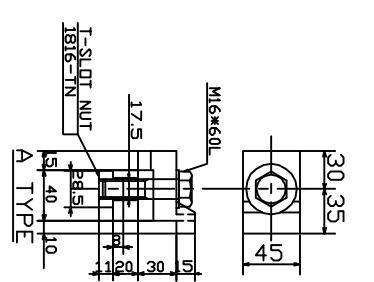
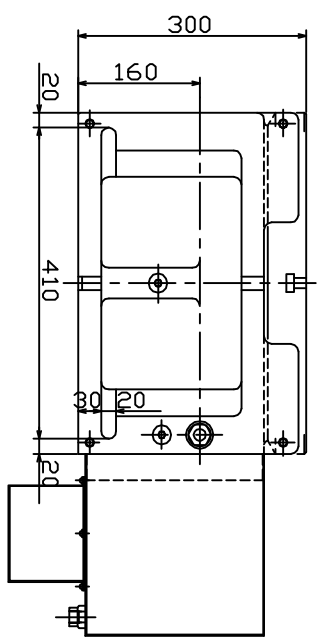
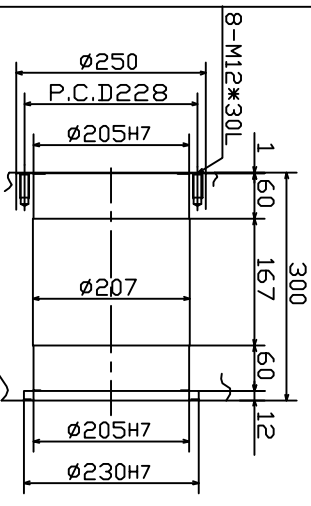
VIEW A
A 矢視



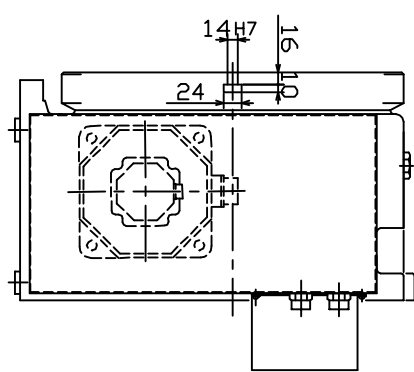
ZERO-POINT RETURN ① DIRECTION



DETAIL OF CENTER BORE (中心穴詳細)



FITTING METAL ASSETS (付録品 各4ヶ所)



a	OIL FILLING PORT FOR BODY	油圧油注入口
b	DRAIN PLUG FOR BODY	油圧油抜き栓
c	SIGHT GLASS FOR BODY	油圧油目視計
d	OIL FILLING PORT FOR GEARCASE	油圧油注入口
e	DRAIN PLUG FOR GEARCASE	油圧油抜き栓
f	SIGHT GLASS FOR GEARCASE	油圧油目視計
g	UNCLAMP PRESSURE SUPPLY PORT	油圧油目視計
h	CLAMP PRESSURE SUPPLY PORT	油圧油目視計

DIAMETER OF TABLE	φ450?
DIAMETER OF SPINDLE HOLE	φ205H7?
CENTER HEIGHT	280?
WIDTH OF T-SLOT	18?mm
WIDTH OF GUIDE BLOCK	18?mm
INDEXING ACCURACY	15sec
CLAMPING METHOD	HYDRAULIC
CLAMPING TORQUE	3.5MPa
NET WEIGHT	387.0N
INERTIA AT MOTOR SHAFT	0.028kg·cm·sec ²
SERVO MOTOR	FANUC
TOTAL REDUCTION RATIO	1/120
ROTATION SPEED	25rpm
MIN. INCREMENT	0.001°
MAX. TORQUE	350?
MAX. CUTTING THRUST	450kgf·m
MAX. WORK INERTIA	17kg·m ²

設計日	修正者	記	★	チェック
△x				
△x				
△x				

MACHINE MAKER	TITLE	CUSTOMER
MACHINE MODEL	Big Bore Type CNC ROTARY TABLE	
SCALE	1/5	
DATE	2003.10.22	
DESIGNED	DDA	FLUMOTO KOBAYASHI
CHECKED		CNC
DRG. NO.	TCA-C7001/5	
NIKKEN KOSAKUSHO WORKS, LTD.		
NIKKEN KOSAKUSHO WORKS, LTD.		

RIGHTS RESERVED