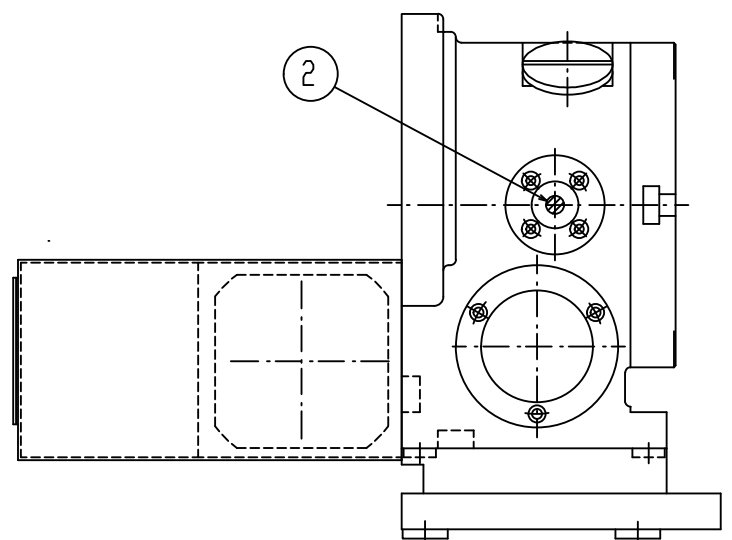
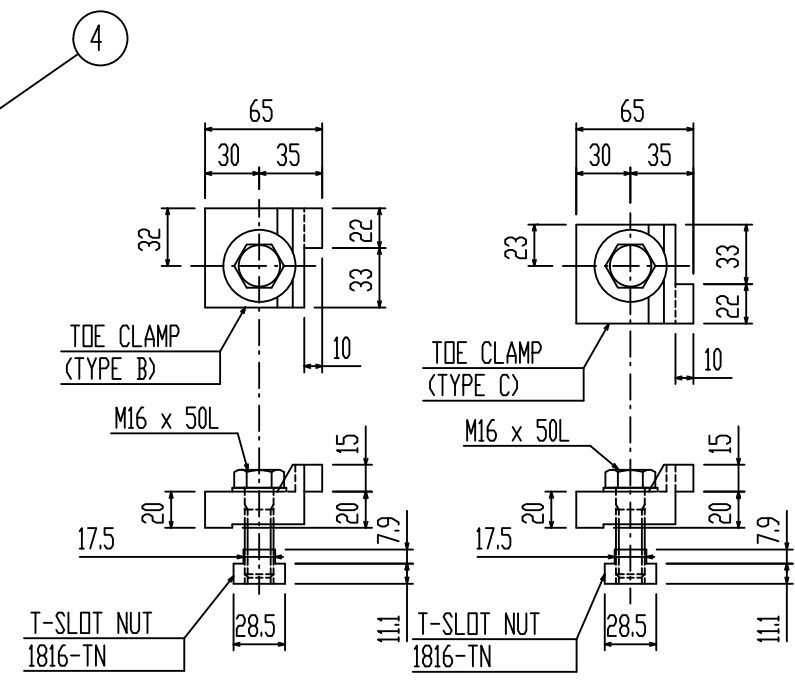
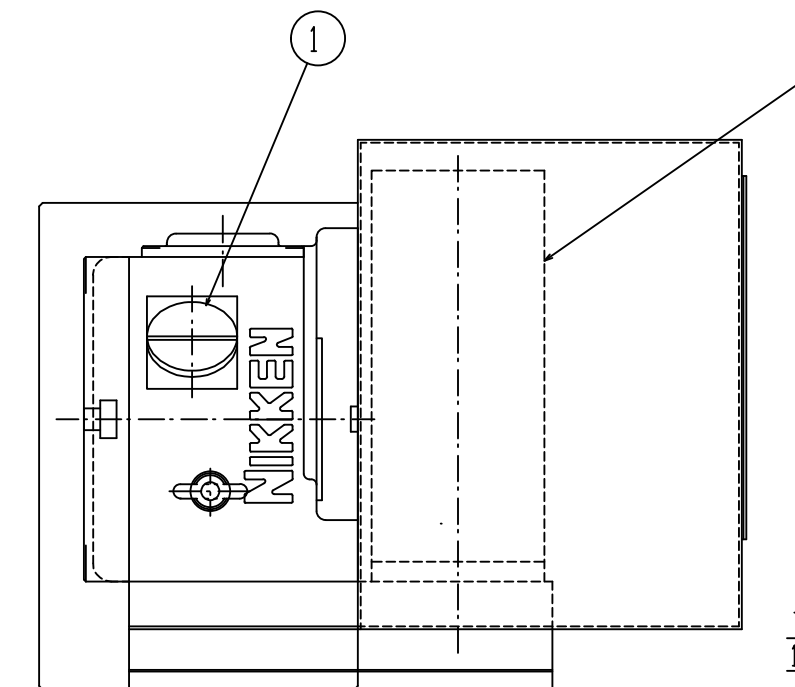


SPECIFICATIONS

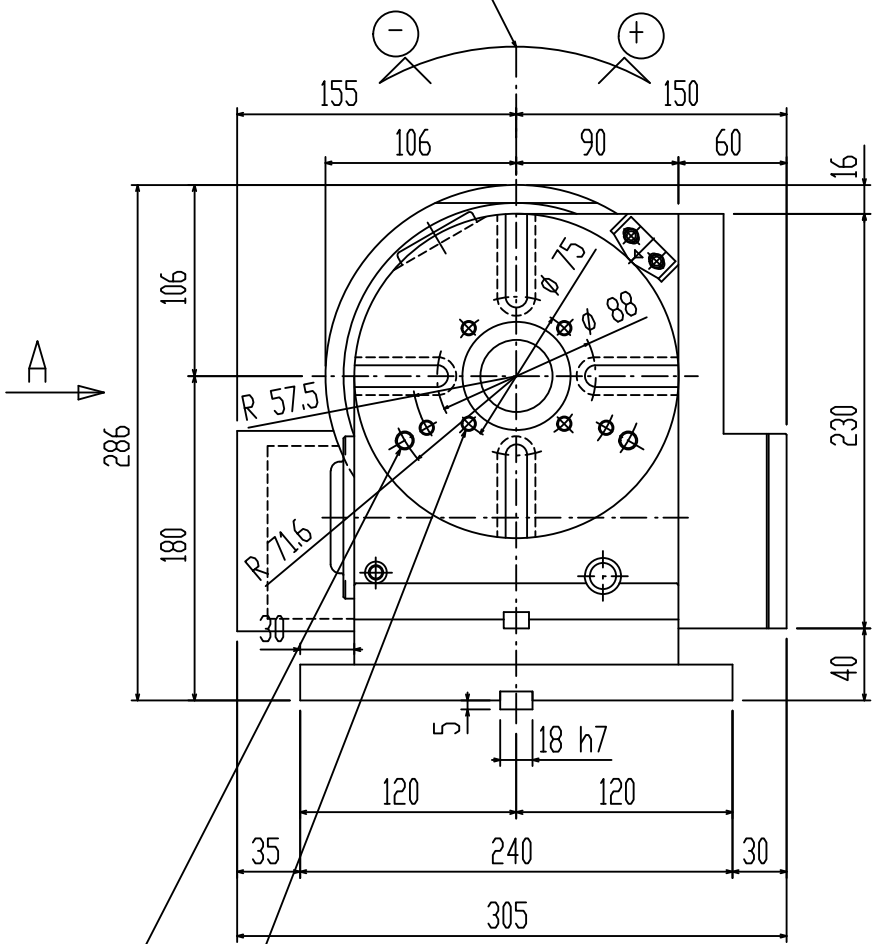
DIAMETER OF TABLE	φ180 mm
DIAMETER OF SPINDLE HOLE	φ60 H7 mm
CENTER HEIGHT	180 mm
WIDTH OF T-SLOT	12 H7 mm
WIDTH OF GUIDE BLOCK	18 h7 mm
INDEXING ACCURACY	± 20 sec
CLAMPING METHOD	PNEUMATIC
CLAMPING TORQUE	31 kgf m 303 N m
NET WEIGHT	55 kg
INERTIA AT MOTOR SHAFT $GD^2/4$	
SERVO MOTOR	A06B-0205-B00 ALPHA 2 i - 5000
PULSE CODER	
TOTAL REDUCTION RATIO	1/90
ROTATION SPEED	22.2 rpm ⁻¹ 22.2 min ⁻¹
MIN INCREMENT	0.001°
MAX LOAD (Vertical)	100 kg
MAX LOAD (Horizontal)	
MAX CUTTING THRUST	42 kgf m 415 N m
MAX WORK INERTIA $GD^2/4$	4.8 kg cm sec ² 0.40 kg m ²



View A
ZERO-POINT RETURN DIRECTION (+)

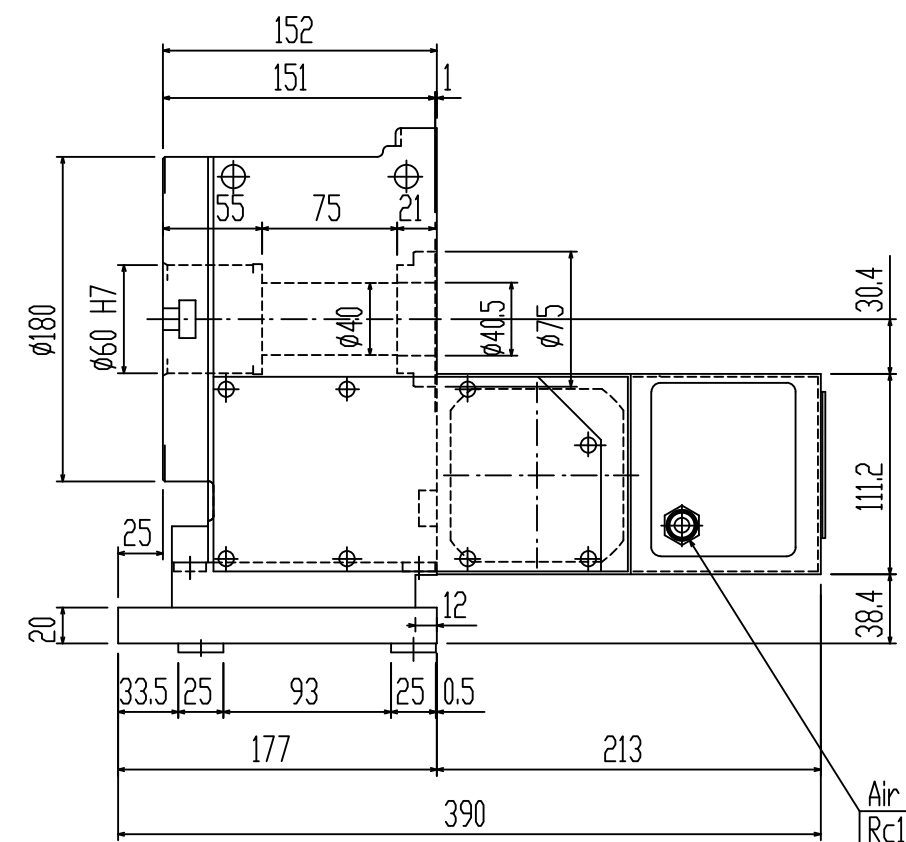


FITTING METAL (2 Sets)

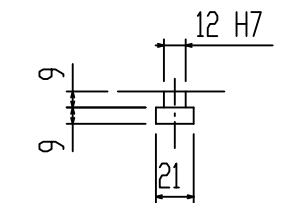
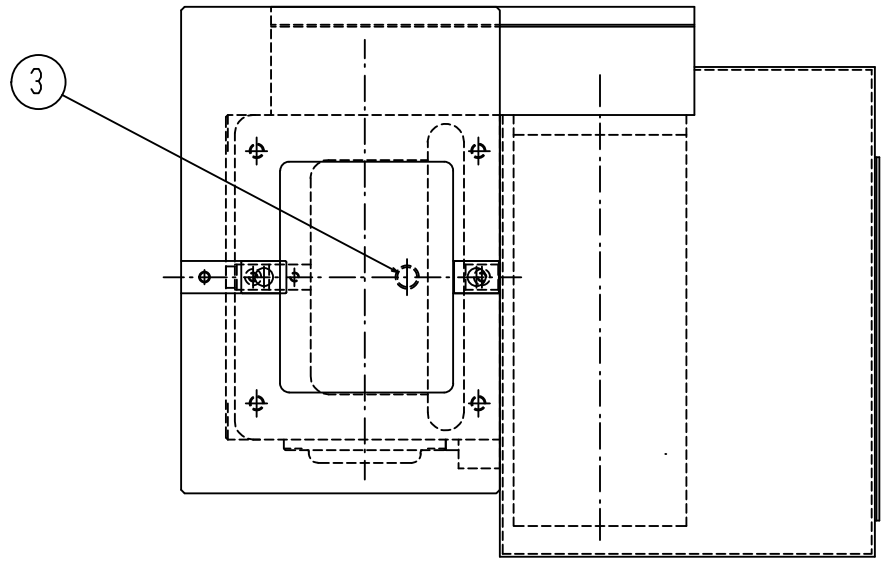
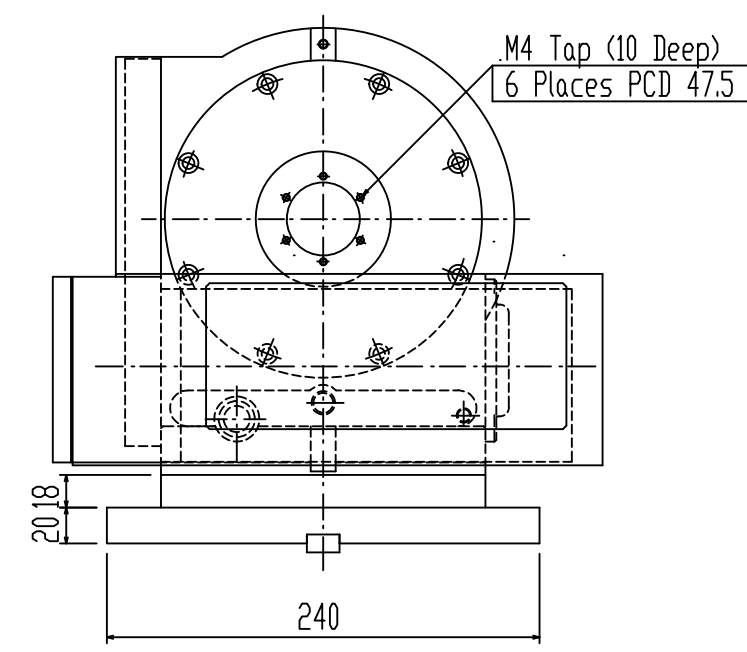


M8 Tap (15 Deep) 6 Places

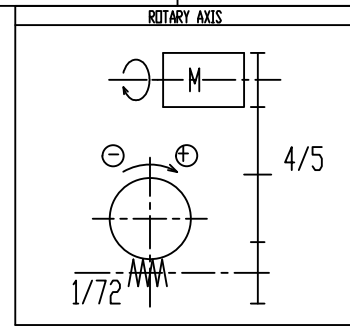
M10 Tap (15 Deep) 2 Places



Air Hose Connection
Rc1/4 Pipe Thread



DETAIL OF T-SLOT



1	OIL FILL PORT FOR BODY G3/4 Parallel Pipe Thread		
2	SIGHT GLASS FOR BODY		
3	OIL DRAIN PLUG FOR BODY Rc1/4 Taper Pipe Thread		
4	SERVO MOTOR		



KIND		TITLE		CUSTOMER	
		CNC ROTARY TABLE			
MACHINE MODEL		CODE NO.		DESIGNED	CHECKED
		CNC 180 BFA		Howard	Uda
SCALE	1/3	NIKKEN KOSAKUSHO WORKS, LTD.		APPROVED	
DATE	MAY 04			Kobayashi	
				DIR-NAME	CNCxxxB
				DRWG. NO.	PH154

KS-CN180B-ZA1