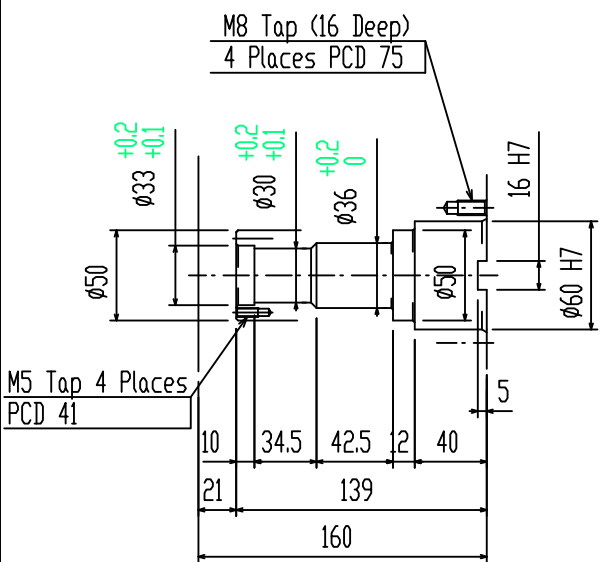
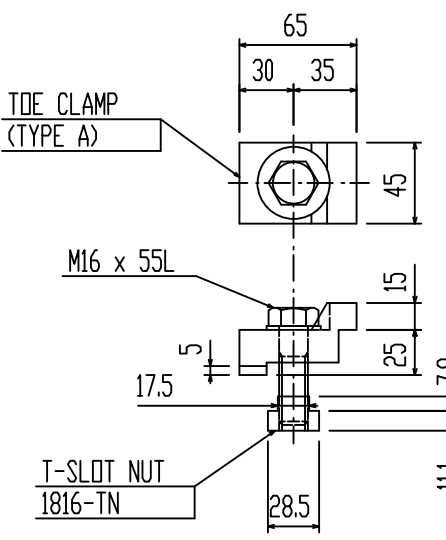
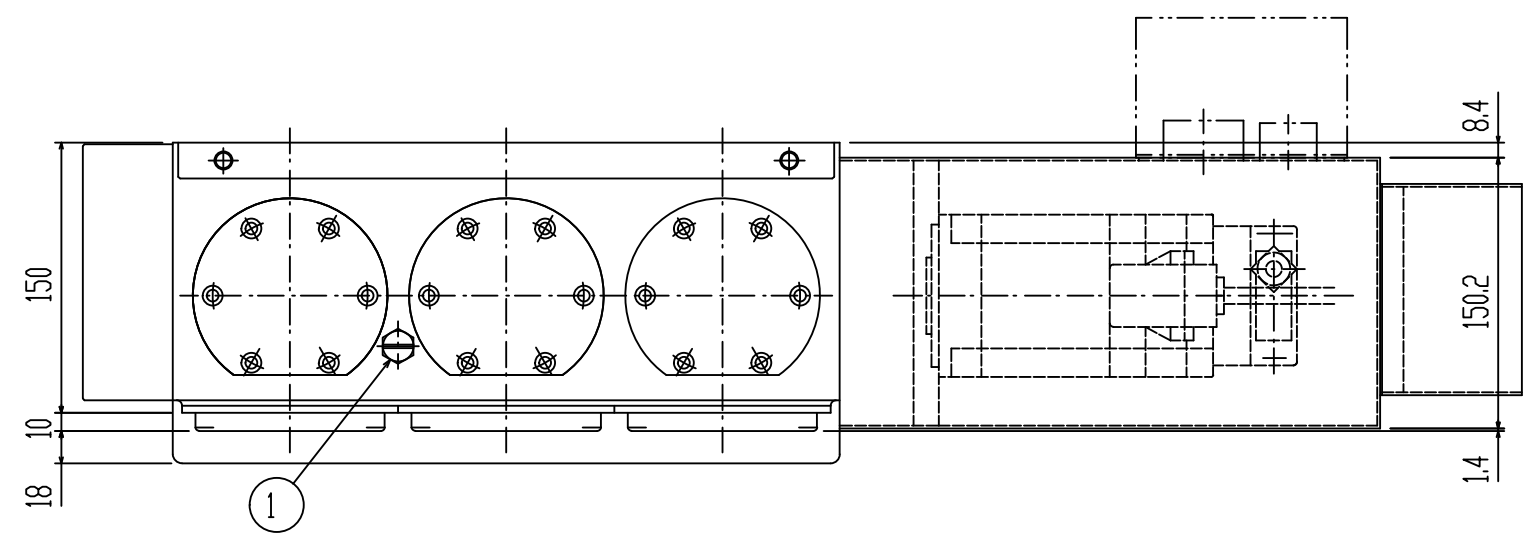


SPECIFICATIONS

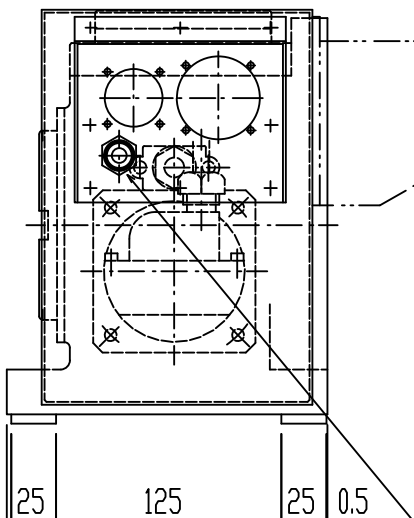
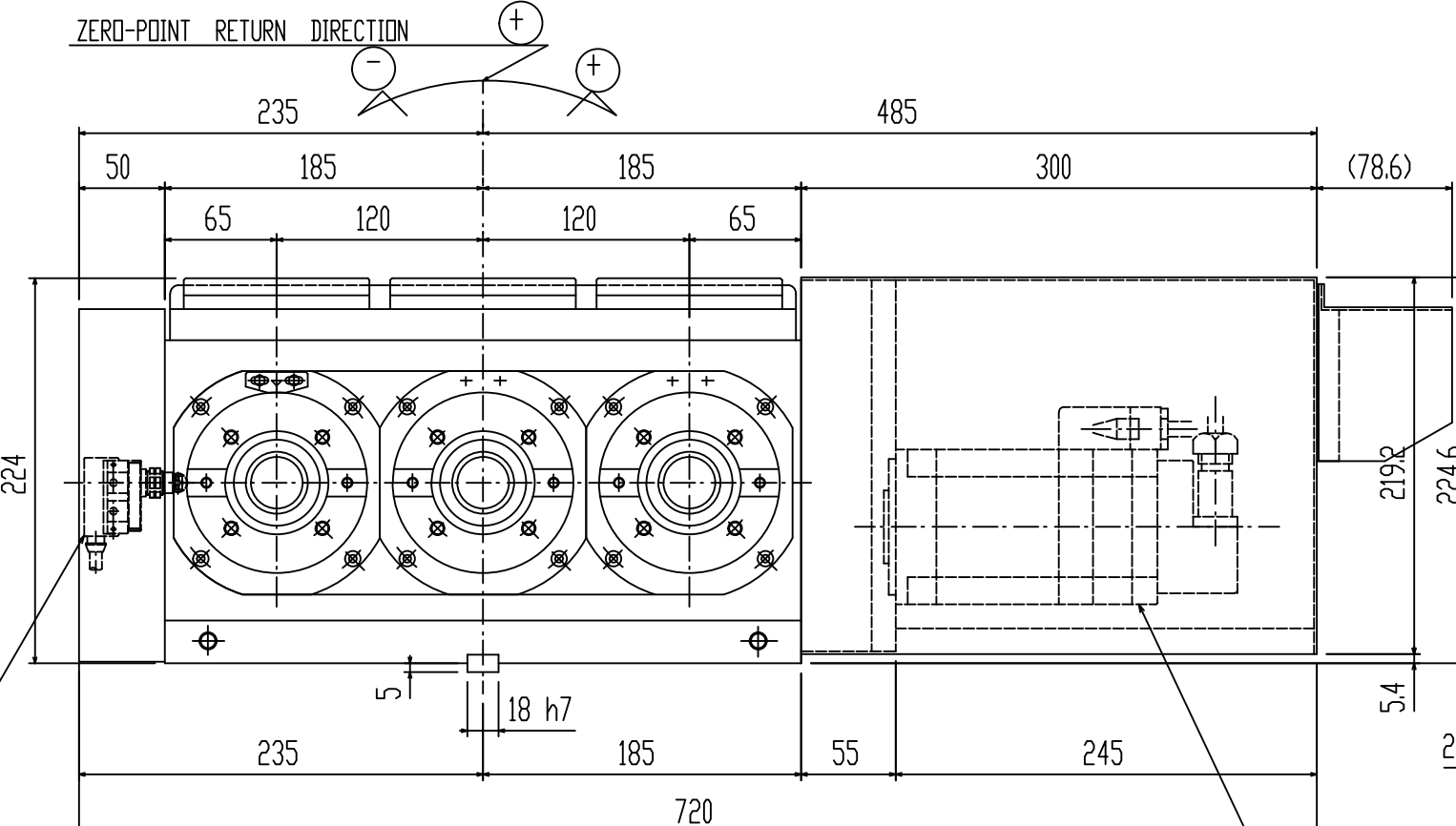
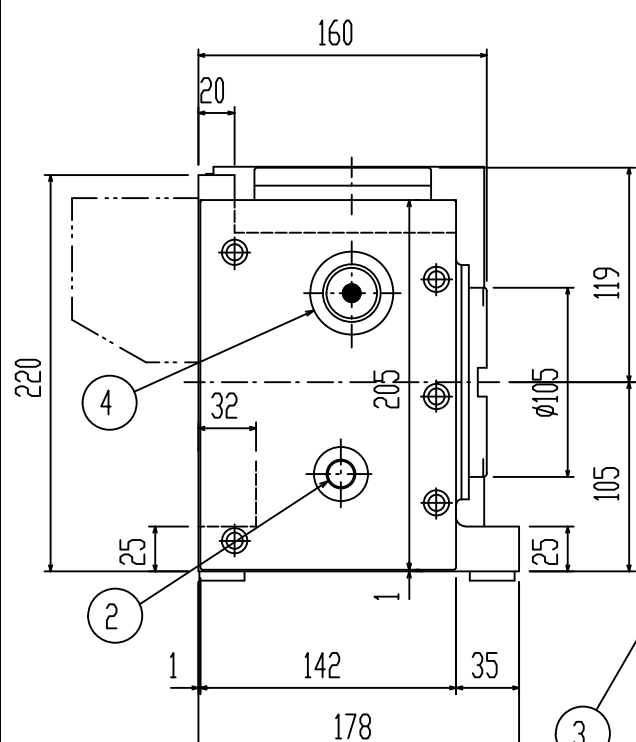
DIAMETER OF TABLE	φ105 mm
DIAMETER OF SPINDLE HOLE	φ60 H7 mm
CENTER HEIGHT	105 mm
WIDTH OF KEY WAY	16 H7 mm
WIDTH OF GUIDE BLOCK	18 h7 mm
INDEXING ACCURACY	±30 sec
CLAMPING METHOD	PNEUMATIC
CLAMPING TORQUE	15 kgf m
NET WEIGHT	90 kg
INERTIA AT MOTOR SHAFT	0.0016 kg cm sec ²
SERVO MOTOR	FANUC AC α2
PULSE CODER	65,536 PPR 1,000,000 PPR
TOTAL REDUCTION RATIO	1/180
ROTATION SPEED	11.1 rpm
MIN INCREMENT	0.001°
MAX LOAD (Vertical)	15 kg / Spindle
MAX LOAD (Horizontal)	30 kg / Spindle
MAX CUTTING THRUST	5 kgf m
MAX WORK INERTIA	0.19 kg cm sec ²



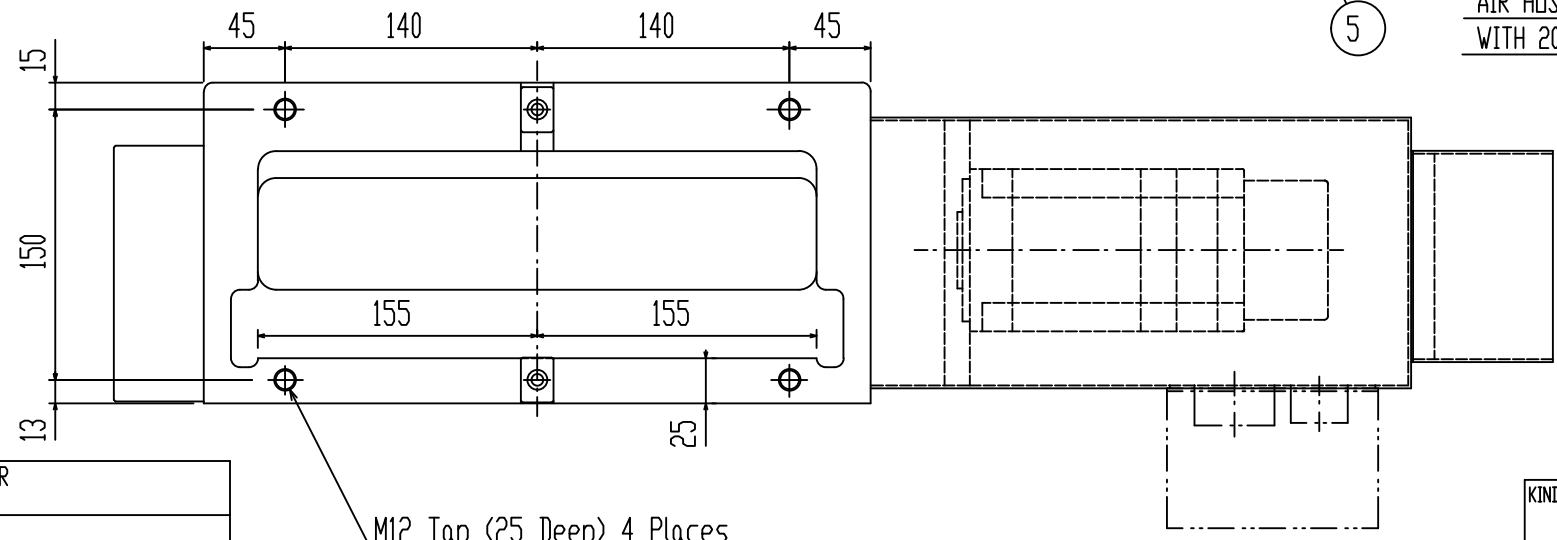
DETAIL OF CENTER BORE



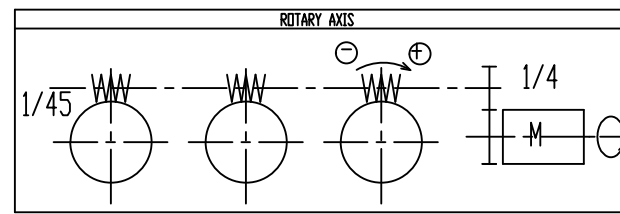
FITTING METAL (4 Sets)



AIR HOSE (φ8 mm, 1.5 m Long) CONNECTION WITH 20PF, 20SH COUPLER



M12 Tap (25 Deep) 4 Places



KS-W2100R-FA4

1	OIL FILLING PORT FOR BODY M12 Fine Thread (pitch 1.0 mm)	5	SERVO MOTOR
2	OIL DRAIN PLUG FOR BODY Rc3/8 Taper Pipe Thread		
3	LIMIT SWITCH (DEC*)		
4	SIGHT GLASS FOR BODY		

KIND	TITLE	CUSTOMER		
	CNC ROTARY TABLE			
MACHINE MODEL	CODE NO.	DESIGNED	CHECKED	APPROVED
	CNC 100-3W-120 FA	Fujimoto	Yoshimoto	Kobayashi
SCALE	1/3	DIR-NAME	2W 3W 4W	
DATE	2000/May/25	DRWG NO.	TCA-400820/0	

